



Local Strategic Planning Statement

Narrandera Shire Council

August 2020



Contents

Local Strategic Planning Statement.....	1
About the statement	4
Policy context.....	4
Connecting Regional Priorities and Plans	4
Vision	5
Context.....	7
Our place in the region.....	7
Narrandera Shire Snapshot.....	9
Structure Map.....	10
Population.....	10
Environment.....	10
Economy.....	11
Our themes and priorities	13
Implementation, Monitoring and Reporting.....	13
An Attractive Region.....	14
Priority 1 Diverse housing options.....	14
Priority 2 A vibrant place to visit and stay	16
A Region which Celebrates its Assets	17
Priority 3 A sustainable region adaptive to changing conditions	17
Priority 4 Protection and management of our environment and heritage	18
A Progressive Region.....	20
Priority 5 Transport and infrastructure connectivity.....	20
Priority 6 Industry growth and diversification	22
Monitoring and action plan.....	23
An Attractive Region	23
References.....	28

Acknowledgement of country

Narrandera Shire Council acknowledges the Wiradjuri people as the traditional custodians of the land and pays respect to the Elders of the community past, present and emerging.

About the statement

Policy context

This Local Strategic Planning Statement (LSPS) sets the framework for Narrandera Shire’s economic, social and environmental land use needs over the next 20 years. It outlines clear planning priorities describing what will be needed, where these are located and when they will be delivered. The LSPS sets short, medium and long-term actions to deliver the priorities for the community’s vision.

This LSPS has been prepared in accordance with clause 3.9 of the *Environmental Planning and Assessment Act 1979* (EP&A Act). The LSPS gives effect to the *Riverina Murray Regional Plan 2036*, implementing the directions and actions at a local level. The LSPS brings together and builds on the planning work found in Council’s other plans and strategies, such as the Local Environmental Plan (LEP), Development Control Plan (DCP) and Community Strategic Plan (CSP). The LSPS will be used to update key components of these plans to present a consistent strategic direction for Narrandera.



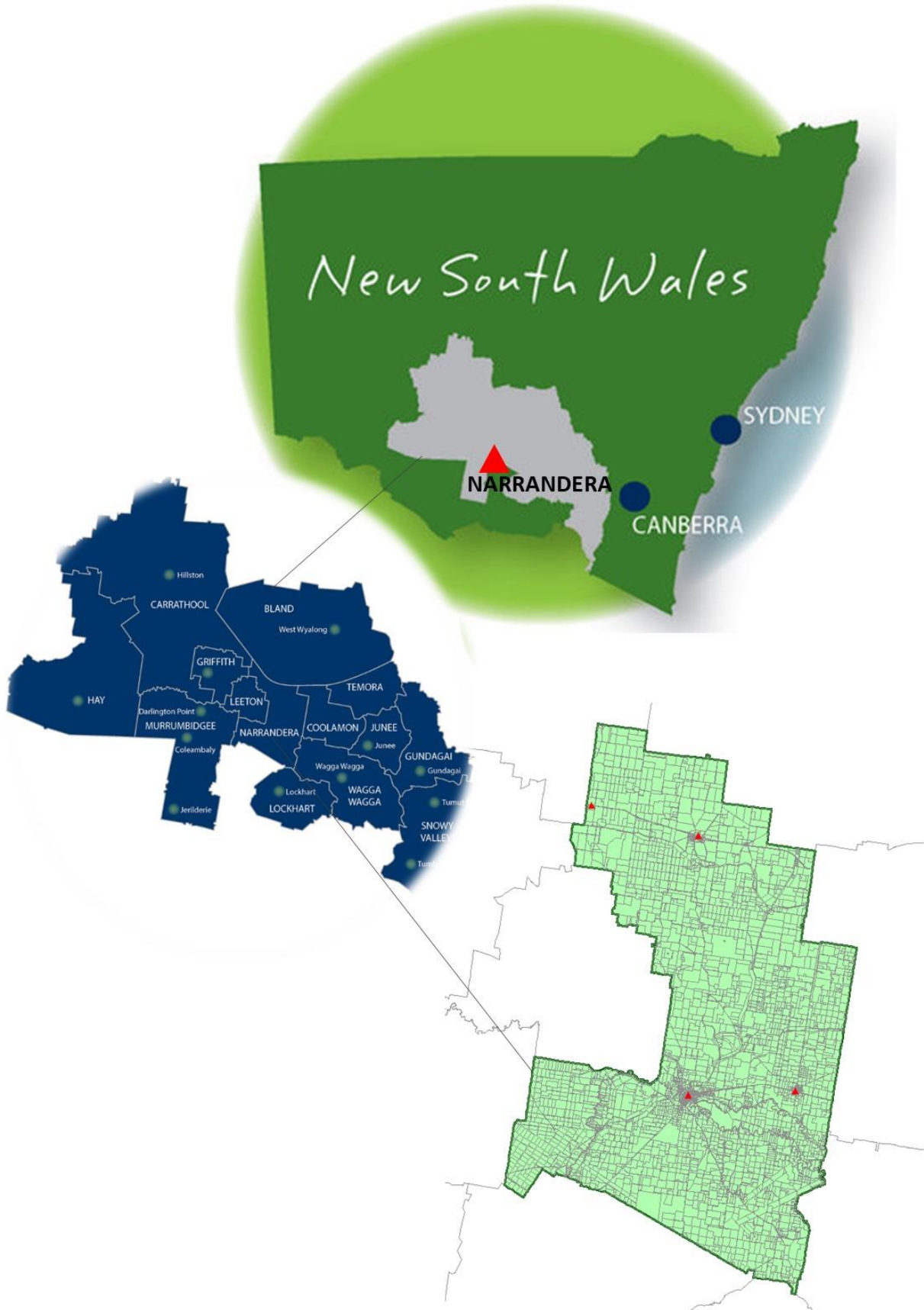
Connecting Regional Priorities and Plans

The *Riverina Murray Regional Plan 2036* is a 20-year vision for the Riverina Murray region, which is to be a diversified economy founded on Australia’s food bowl, iconic waterways and a network of vibrant connected communities. The Riverina Murray Regional Plan outlines a series of directions and actions to realise this vision, identifying local councils as having a significant role to play in achieving the desired outcomes.

The findings of the Western Riverina Regional Economic Development Strategy 2018-2022 are also considered, which sets out a vision for economic growth, building on the region’s competitive advantages. Narrandera is identified as being within the Western Riverina Functional Economic Region, together with Carrathool Shire, Griffith City, Leeton Shire and Murrumbidgee councils.

Vision

Council's objective is to create a set of planning controls and resources which care for our environment while also facilitating appropriate development to support the economic prosperity of our shire for the benefit of our community.



Context

Our place in the region

Narrandera Shire is situated centrally in the Riverina region of NSW, 554kms south west of Sydney, 339km west of Canberra and 437kms north of Melbourne (**Figure 1**). Narrandera is equidistant from the major regional centres of Wagga Wagga (99km to the east) and Griffith (98km to the west) which are approximately an hour away. Both major centres support the community by providing health and educational services.

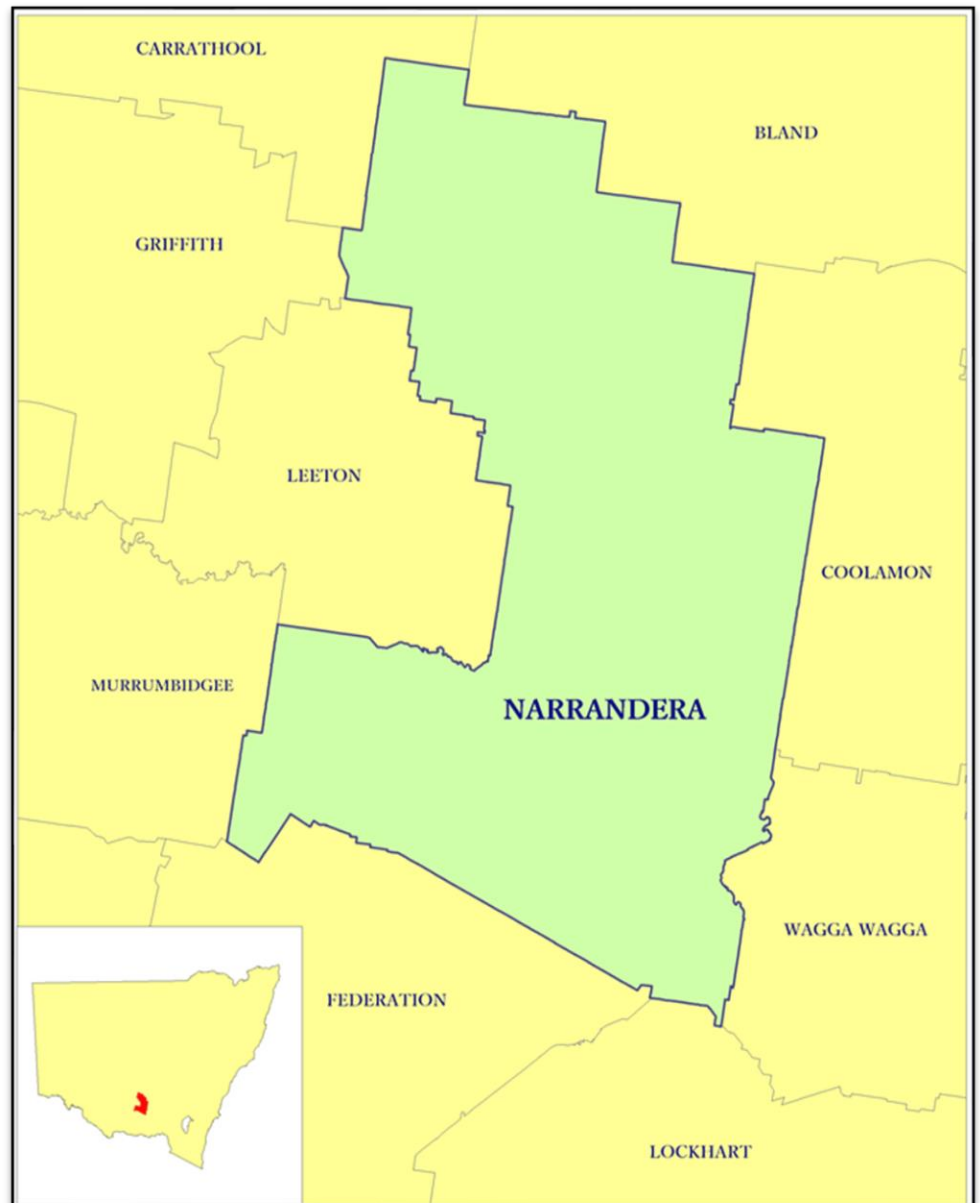


Riverina-Murray region context map

Narrandera Shire is known for its undulating plains, persistently dry semi-arid climate and the Murrumbidgee River runs through the Shire (DPIE, 2016). The Shire is a transition area between the western slopes region which is characterised by broad acre farming characteristic to the east and productive Murrumbidgee Irrigation Area, which is characterised by irrigated horticulture to the west. Narrandera’s name comes is derived from the Wiradjuri word “Narrungdera” meaning place of the goanna or place of many lizards. Narrandera Shire was formed in 1960 through the amalgamation of the Narrandera Municipality and part of the previous Yanco Shire.

Narrandera's residents enjoy a picturesque natural setting, heritage buildings, a friendly community and an attractive country lifestyle. In consultation with the local community, the Narrandera Community Strategic Plan (2017) set the following vision for the Shire:

We are a prosperous, diverse and sustainable community, built on a deep sense of trust, care and commitment for each other and our environment.



Narrandera Shire Snapshot

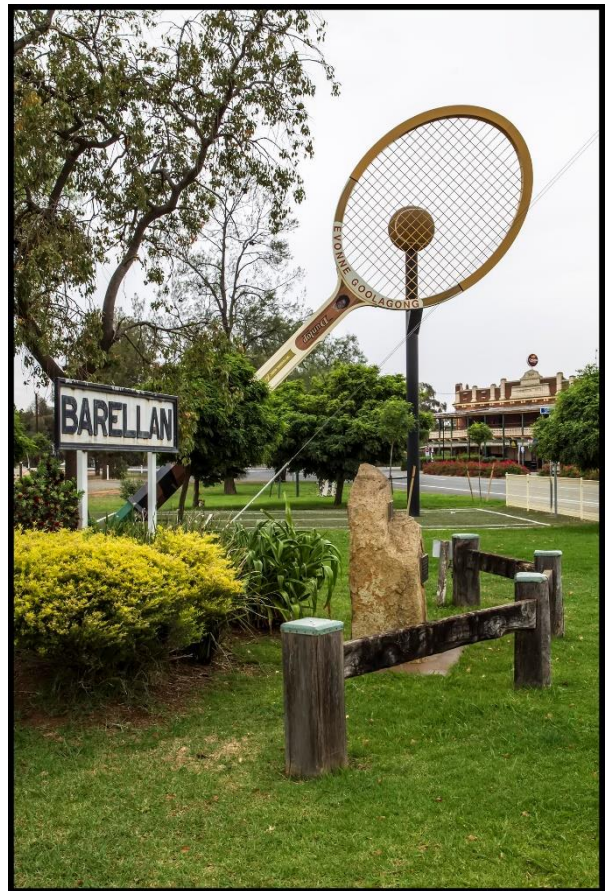
Narrandera township is the major urban centre for the Shire, with a concentration of services and facilities including Narrandera Art and Community Centre, Narrandera District Hospital, Adventure Park, public and private schools, TAFE, a police station, post office, court house, Marie Bashir Park, council buildings and the Narrandera Showground. Narrandera is home to two-thirds of the Shire's population and is the retail centre for the Shire and acts as a service hub for the northern section of Federation Shire to the south.

Barellan is a quiet small village located on Burley Griffith Way 56km north of Narrandera and had a population of 334 at the 2016 census. The dryland farming around the town is known for producing high quality barley with the local brewery taking full advantage. Barellan is known for the Big Tennis Racquet, which is a 20:1 scale model of former local and great Australian tennis player Evonne Goolagong-Cawley, OAM.

Binya is located 83km north-west of Narrandera along Burley Griffin Way. Binya is a friendly broad acre farming community which has deeply rooted ties to the Binya Hall. The area of Binya had a population of 140 at the 2016 census. Binya is at the footsteps of the Binya State Forest, Cocoparra National Park and John Oxley memorial.

Grong Grong is a small farming village located 20km east of Narrandera, just off the Newell Highway which as of 2017 bypasses the town. The small village had a population of 250 at the 2016 census. Grong Grong has many outdoor activities including Berembled Weir and Grong Grong Earth Park.

The Shire is also home to a further 15 rural localities – Ardlethan (part), Brobenah, Colinroobie, Corbie Hill, Kamarah, Landervale, Moomboolbool and Murrami to the north of Narrandera and Boree Creek, Corobimilla, Euroley, Galore, Gillenbah, Morundah (part) and Sandigo to the south are located throughout the Shire.

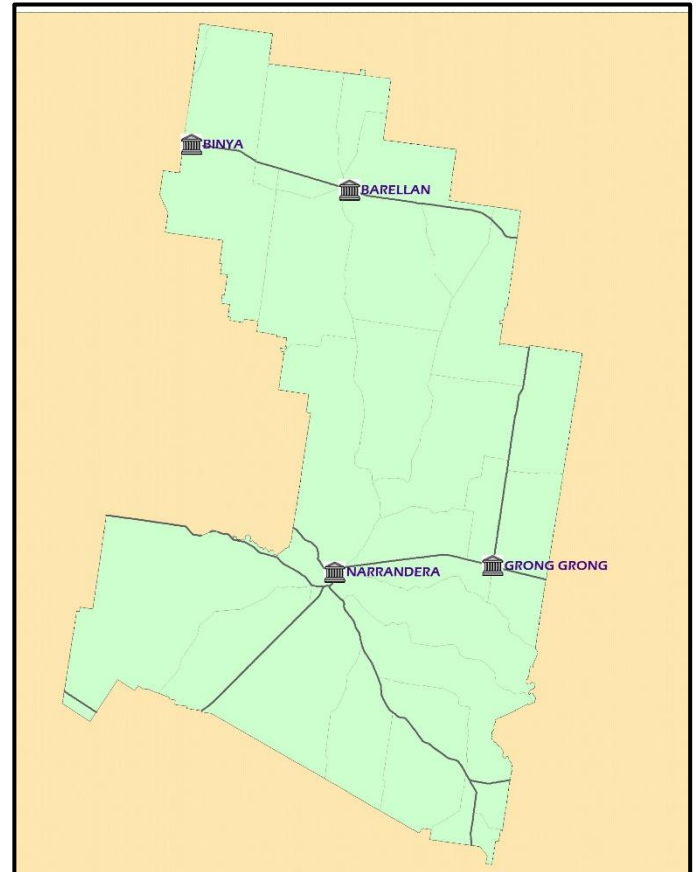


Structure Map

Population

Narrandera Shire had a population of approximately 5,950 people in 2016 and is projected to decrease to 4,800 persons) in 2036 according to statistics from the Department of Planning Industry and Environment. The main contributing factor for this projected population decline is movement of people to nearby rural centres such as Albury, Griffith, Leeton and Wagga. These areas have drawn residents away from the Shire as they seek opportunities that larger centres can offer. One of the most critical challenges identified in this LSPS is to find opportunities to address and reverse this trend to ensure the ongoing prosperity of the shire.

The composition of our population is also changing to an older demographic. The percentage of adults aged 65 and over was 21% in 2016 and is expected to grow to 32% by 2036. This trend is being experienced across NSW and presents challenges as less people are of working age and demands on health services to support aging in place increases.



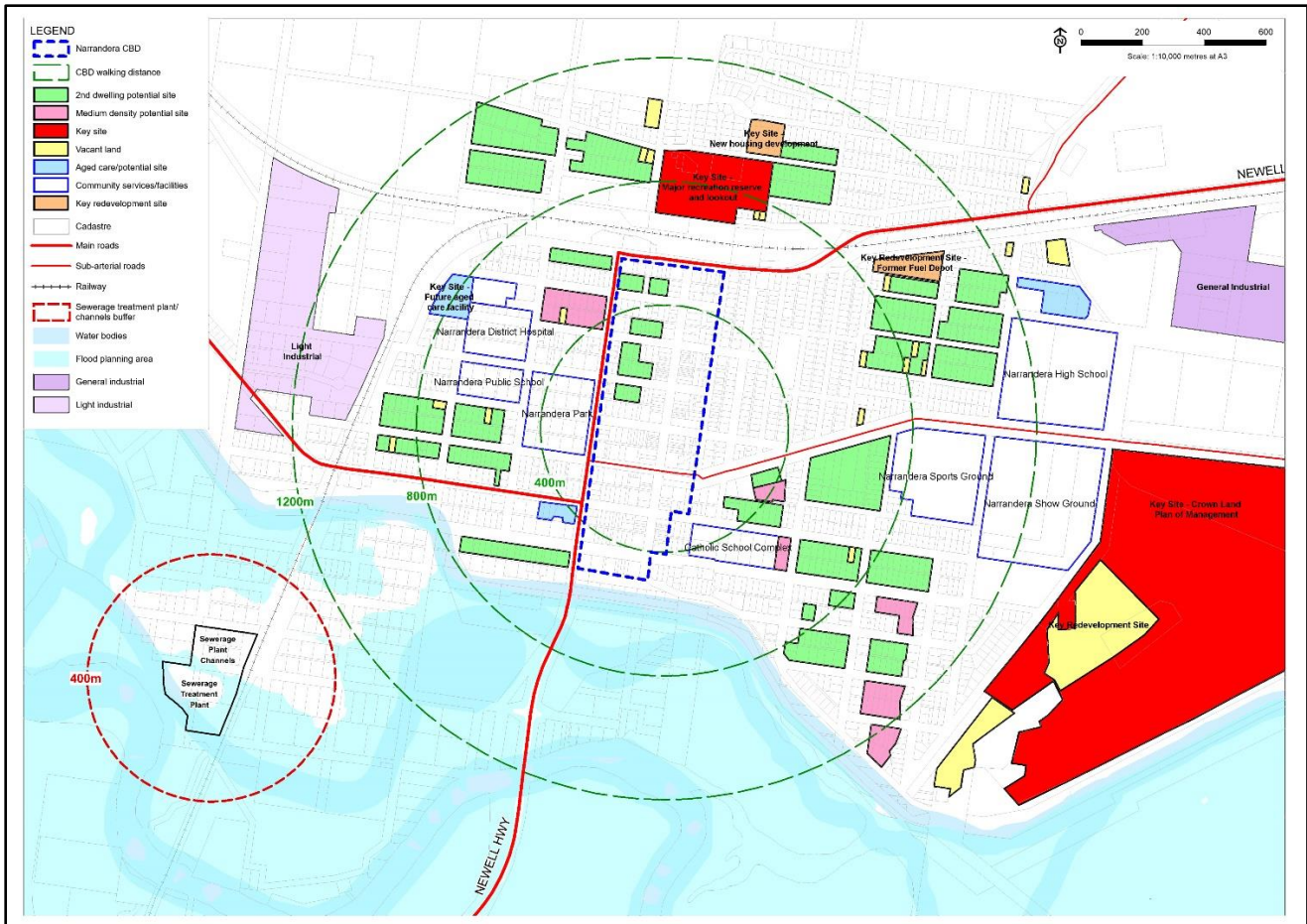
Environment

Narrandera shire takes immense pride in the natural environment due to the resources, beauty, tourism and inherit value of these natural areas. The hills north of Narrandera, rise between 100 and 200 metres above the plain and form high points such as Square Knob, Mt Brobenah, Mt Barrat, Mt Bunganbil and Bent's Hill. Across the Shire, the main protected areas include four State Forests, Murrumbidgee Valley Regional Park, two Nature Reserves and the Narrandera Flora and Fauna Reserve which is iconic for its Koala Regeneration Area. The wealth of beauty of the shire is something that can be capitalised in order to differentiate from nearest regional areas.

Water is important across the shire as a resource to supply our communities, agriculture and environment. The Shire has series of wetlands, such as Narrandera Wetlands, Lake Coolah and Mejum Swamp, which is home to a variety of native birds. The Murrumbidgee River and major tributaries, such as the Yanco Creek, Bundidgerry Creek, Mirrool Creek and Sandy Creek are enjoyed by residents and visitors. Lake Talbot is a prominent feature for Narrandera as an ideal location for water sports, swimming and fishing.

Economy

Narrandera Shire has a diverse economic base. In 2014/15 the Shire had 540 businesses and 2,709 local jobs and a gross regional product (GRP) of \$235 million. The Shire accounted for 2.9% of the Riverina Region GRP and 0.05% of the NSW GRP. From 2011/12 to 2014/15, Narrandera Shire had one of the highest increases in GRP (18.7%) within the Riverina Region, well above the regional increase of 13.4%.



Agriculture is the main economic activity and employer with 19% of the Shire's workforce employed in this sector. Other significant economic sectors within the Shire are health and aged care, education and training. Accommodation and food services, manufacturing, retail and tourism. At the 2016 Census Narrandera had an unemployment rate of 6.1% which is relatively high for the Riverina Murray region but below the average Regional NSW unemployment rate of 6.6% and the overall NSW unemployment rate of 6.3%.

Currently, Healthcare and social assistance are the largest employer in terms of the wages, 266 employees being paid \$21.7 million. Even though Agricultural, Forestry & Fishing is the largest employer in terms of number of employees, 510 employees being paid \$13.1 million. Other industries such as Public Administration & safety, construction, educational & training, manufacturing are some of the other industries which proportionally out-weigh the primary industry. This proves that there is an increased need to provide the skilled labour force within Narrandera.

Our themes and priorities

Priorities for Narrandera under the Riverina Murray Regional Plan:

- Encourage local entrepreneurship and seek to attract new business and industry, and support and encourage emerging industries such as nuts and aquaculture to create long-term employment opportunities and attract skilled workers.
- Provide an adequate supply of industrial land to attract new industry and accommodate future expansion.
- Upgrade town streetscapes to support commercial transactions and social interactions, and provide appropriate infrastructure to support recreational facilities, as well as infrastructure to support tourist destinations in the shire, including river and forest areas.
- Enhance the freight network and infrastructure, including rail infrastructure, to facilitate a mode shift from road to rail, linking freight corridors to rail networks.

Based on the Priorities set above, Council has chosen the following themes as priorities to achieve the vision set out for Narrandera Shire.

An Attractive Region

Priority 1 Diverse housing options

Priority 2 A vibrant place to visit and stay

A Region that Celebrates its Assets

Priority 3 A sustainable region adaptive to climate change

Priority 4 Protection and management of our environment and heritage

A Progressive Region

Priority 5 Transport and infrastructure connectivity

Priority 6 Industry growth and diversification

Implementation, Monitoring and Reporting

Council will ensure the planning priorities are achieved through regular review and monitoring of the actions' progress. Monitoring of the actions will where possible, will be aligned to existing review and reporting schedules including the LEP (5 years) and CSP (4 years). The entire LSPS will also be reviewed every 4 years to align with the CSP but at least every 7 years to meet legislative requirements. This approach is consistent with the Integrated Planning and Reporting framework under the *Local Government Act 1993*.

An Attractive Region

Priority 1 Diverse housing options

Gives effect to the following Riverina Murray Regional Plan Directions:

- Direction 25: Build Housing Capacity to meet demand.
- Direction 26: Provide greater housing choice.

The township of Narrandera will be responsible for most of our housing delivery over the next 20 years. Residents already enjoy a variety of housing types, with small residential and townhouse style development within proximity to main street and services. Large lot and rural residential style living options are largely focused to the east (along the Newel Highway), north (surrounding the Narrandera golf club) and West (along irrigation ways and the Murrumbidgee river) of Narrandera. To the south there is pressure for further residential development to gain access to riverfront views of the Murrumbidgee River. Given the flooding constraints further development should only be permitted where it is compatible with the flood hazard.

Outside the township of Narrandera, our villages provide housing to rural communities supporting the agricultural sector and provide additional housing and lifestyle choices. The Narrandera township's existing residential land is expected to accommodate any future residential growth opportunities for the next 20 years in line with projected population decline. However, should our community be successful in reversing this trend an increase in housing demand may justify opening up further land to residential development. Council will consider any such proposals on the basis of demand at the time and based on whether the proposal supports population retention and growth through providing for desirable housing options without negatively impacting existing urban areas and agricultural operations. The villages of Borellan and Grong Grong already provide opportunity for housing choices through large lot and rural residential land which are supported by local shops and community facilities. There is existing capacity for growth in these communities.

Housing affordability is an issue faced by almost all of NSW, particularly for younger and older demographics. Providing diverse housing options can help enhance liveability of an area. There is an opportunity to provide a flexible approach to support an increase in different styles of housing, leveraging off key locations such as the Narrandera District Hospital, schools and the Narrandera town centre.

The Western Riverina Regional Economic Development Strategy 2018-22 found that Narrandera had 19.8% of the workforce working in a neighbouring Local Government Area, mainly Wagga Wagga. Narrandera is approximately an hour away from larger centres such as Wagga and has competitively priced lands. Council intends to capitalise on this opportunity by continuing to provide an adequate supply of housing options for people who may wish to join our community and benefit from the lifestyle on offer.

Narrandera and the Riverina Region have experienced an influx of transient, seasonal and itinerate workforces. Council will support opportunities to provide housing for this sector of the community.

To deliver this planning priority, Council will:

- Encourage affordable and diverse accommodation options to retain existing residents and attract new residents.
- Collaborate with industry, service providers and the community to improve the supply of rental housing and temporary accommodation for seasonal workers in the region.
- Ensure any greenfield development is appropriately located and serviced.

Narrandera Shire Council will achieve this through the following actions:

- Complete a local housing strategy.
- Review LEP and DCP controls to ensure adequate supply of diverse housing options and temporary accommodation choices.
- Monitor demand and ensure that additional land is made available at appropriate times to support growth if needed.

Priority 2 A vibrant place to visit and stay

Gives effect to the following Riverina Murray Regional Plan Directions:

- Direction 7: Promote tourism opportunities.
- Direction 28: Deliver healthy built environments and improved urban design.

Narrandera township is enhanced by its tree-lined streets and heritage buildings and is cherished by the proud residents of the town. To further improve the vibrant East Street and surrounds of Narrandera, Council is in the process of finalising design concepts, costing and funding the upgrade the CBD. These upgrades, in conjunction with appropriate signage, is expected to increase the tourist footprint through Narrandera. It is envisioned this approach will increase economic opportunities for the core retail area. Council will continue to promote Narrandera as a vibrant place, which is open for business new and emerging commercial land uses in our core trading area.

Our Shire is home to a wide array of public spaces such as Grong Grong Earth Park, Marie Bashir Park and Narrandera Adventure Park. Council will continue to maintain and improve our public spaces to ensure that Narrandera remains attractive and modern. Attractive public facilities contribute to healthy communities which increases the desirability of living of an area.

Narrandera can offer a wide range of rural and nature-based activities with reasonably priced accommodation. Narrandera's visitor information center is a powerful player in creating a nexus between tourism and the available attractions across our Shire. Tourism across our Shire can also benefit from improvements in infrastructure, promotion and signage. Ensuring our attractions such as the Narrandera Fisheries Centre, Charles Sturt Memorial, Koala Reserve, Barellan Museum and Lake Talbot Lookout are serviceable and well maintained will help attract and maintain our population. Narrandera Shire also offers a range of Agri-tourism for tourists and residents. Our Shire offers hazelnut and almond production, lamb products, fruit orchards, honey products, cropping, artisan foods and even aquaculture which are available for tourists with a keen sense of taste.

To deliver this planning priority, Council will:

- Create attraction for travelling tourists to support our commercial centre by improving the entrance to the town centre.
- Manage recreational facilities and tourist destinations to promote the Shire as a desirable place to live and visit.
- Collaborate with relevant organisations, state agencies and land owners to manage tourist areas.
- Support the development and maintenance of appropriate infrastructure within significant recreational destinations including environmental protection areas.
- Investigate strategies to source funding for re-development of the council facilities, such as the Narrandera Visitor Information Centre, which helps improve tourism within the region.

Narrandera Shire Council will achieve this through the following actions:

- Review our LEP to allow for nature-based or experiential tourism in appropriate locations.
- Investigate opportunities to increase signage along key routes for local attractions.
- Creating a Plan of Management for our open spaces.

A Region which Celebrates its Assets

Priority 3 A sustainable region adaptive to changing conditions

Gives effect to the following Riverina Murray Regional Plan Directions:

- Direction 11: Promote the diversification of energy supplies through renewable energy generation.
- Direction 14: Manage land uses along key river corridors.
- Direction 16: Increase resilience to natural hazards and climate change.
- Direction 28: Deliver healthy built environments and improved urban design.

Across NSW our variable climate is resulting in increasing impacts from drought, bushfire, water availability and flooding. Increasing natural hazard resilience is vital for our community to appropriately prepare and manage these events. To help manage these impacts we will embrace new technologies and practices to reduce carbon emissions, efficiently manage natural resources and appropriately locate developments.

The Murrumbidgee River is a prized asset of our region, however, the proximity of Narrandera to the river increases the impacts of flooding to our community. Riverfront views are highly sought after and balancing the need of preserving our natural assets and permitting suitable development can be complicated. Council will continue to implement the Barellan Flood Study and Narrandera Floodplain Risk Management Study and Plan and update these studies if flood patterns or climate change. This will help inform government, developers and landowners about the risks for particular sites when making future development decisions.

Bushfire prone land has been mapped across our Shire however the extent and nature of bushfire prone land may change over time. To ensure our community is appropriately informed and prepared for bushfire, we will continue to regularly update mapping in planning controls and strategies which manage the risks of bushfire such as the Plan of Management - Narrandera Flora and Fauna Reserve.

One key long term action to combat climate change is to invest in environmentally conscious practices and innovate new ways to be sustainable. Becoming a well-informed community can help us to adapt to and plan for future climate risks and land use planning plays an important role in this. By promoting appropriate locations for renewable energy, we can protect our existing assets and enable this emerging energy sector to grow.

To deliver this planning priority, Council will:

- Consider the best available flood information to manage development in and near floodplains.
- Manage development of bushfire prone land and risks associated with it.
- Consider and where possible implement sustainable environmental practices.

Narrandera Shire Council will achieve this through the following actions:

- Finalise and implement the Integrated Water Cycle Management Plan.
- Regularly review strategies and mapping which manage flood affected and bushfire prone areas.
- Incorporate controls into the Narrandera Development Control Plan for enhanced environmental outcomes such as energy efficiency, rain water tanks and 'green star communities'.

Priority 4 Protection and management of our environment and heritage

Gives effect to the following Riverina Murray Regional Plan Directions:

- Direction 15: Protect and manage the region's many environmental assets.
- Direction 29: Protect the region's Aboriginal and historic heritage.

Our community takes pride in the abundance of the natural resources situated within the Shire. Managing and protecting these natural assets is one of the keys to attracting people in to the shire. Within Narrandera Shire our protected environmental areas are restricted to four State Forests, Murrumbidgee Valley Regional Park, two Nature Reserves, the Narrandera Flora and Fauna Reserve and Travelling Stock Reserves. Identifying non-protected areas with high environmental value is a priority to preserve our local biodiversity. We will adopt the principles of avoid, minimise and mitigate to appropriately manage and protect biodiversity values from inappropriate land uses and development. This will provide a balance between the growth of our communities and economy, and preservation of local biodiversity for future generations.

A natural attraction of Narrandera is the Koala Management Reserve located in the Murrumbidgee Valley National Park. The Koala's were re-introduced to the area in 1972 and through protection and management the population has now grown to more than 200 koalas. Council will ensure this core koala habitat is appropriately managed to ensure the population can be maintained and encouraged to grow as they recolonise old habitats across Narrandera.

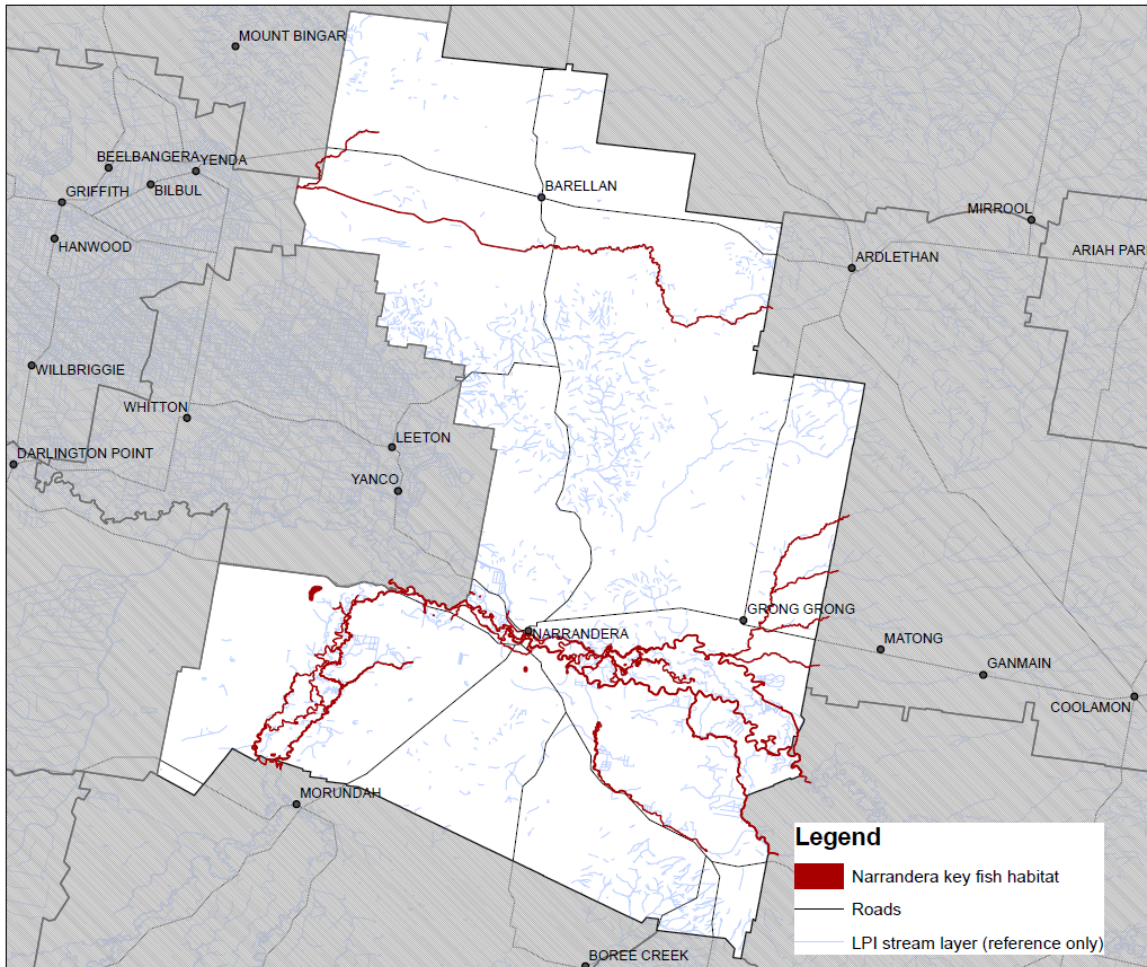
In addition to the natural environment, Narrandera has many heritage assets such as our heritage buildings, the Paddle Steamer Wagga Wagga wreckage, Wiradjuri Honour wall, Tiger Moth Memorial and Gillenbah Grave. Protecting and promoting these assets provides great opportunities attract locals and visitors to our Shire and educate them about our rich heritage to keep these stories alive. Council will continue to encourage preservation and reuse of heritage buildings to ensure they are appropriately maintained and inhabitable for future generations to benefit from.

To deliver this planning priority, Council will:

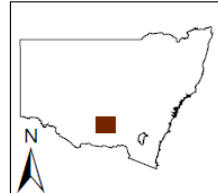
- Identify and protect the Shire's high environmental value areas from incompatible land uses.
- Support the enhancement of high environmental value areas and restoration of degraded vegetation.
- Encourage and support use, re-use and suitable adaptation of heritage buildings.
- Avoid and minimise impacts to Aboriginal and historic heritage values.

Narrandera Shire Council will achieve this through the following actions:

- Update Development Control Plan to regulate high conservation vegetation as per the *State Environmental Planning Policy (Vegetation in Non-Rural Areas) 2017*.
- Prepare a comprehensive Koala Plan of Management.
- Review council owned land for opportunities to enhance biodiversity values
- Work with the local Aboriginal community to develop resources regarding places and items which should be suitably protected and managed.



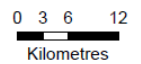
Key Fish Habitat NARRANDERA LGA



Source: data from the Australian Geoscience, NSW DPI, NSW DECC and NSW LPI
 Datum: Geocentric Datum of Australia (GDA)
 Grid: Mapping Grid of Australia (MGA84)

The State of New South Wales, the Department of Primary Industries, its employees, officers, agents or servants are not responsible for the result of any actions taken on the basis of the information contained on the map, or for any errors, omissions or inaccuracies that may occur on this map.

Prepared by GIS section, Fisheries Ecosystems Branch, Division of Agriculture & Fisheries, NSW DPI.



**NSW DEPARTMENT OF
PRIMARY INDUSTRIES**

A Progressive Region

Priority 5 Transport and infrastructure connectivity

Gives effect to the following Riverina Murray Regional Plan Directions:

- Direction 18: Enhance road and rail freight links.
- Direction 19: Support and protect ongoing access to air travel.

Narrandera is in crossroads for major roads and rail connection, this has a strategic advantage for both the residents and industries within Narrandera. Narrandera-Leeton Airport located 6.3km from Narrandera town centre provides direct return services from Griffith and Sydney. As the township of Narrandera is located just 99 kilometres east of Wagga Wagga and 98km west of Griffith residents have good access to other main regional centres. Managing and protecting our connectivity to the region and beyond for people and freight is a priority for the growth of our Shire.

Narrandera currently has a rail connection to the North (Dubbo through Parkes), East (Wagga Wagga), South (Shepparton, Victoria) and West (Mildura). Protecting and enhancing connections to local freight and logistics hubs such as WR Connects in Leeton and Riverina Intermodal Freight & Logistics (RiFL) Hub in Wagga Wagga will ensure our gateway to Murrumbidgee Irrigation Area (MIA) remains open.

Red Hill Industrial Estate is located at the North of Narrandera Township and is approximately 1km from the Newell Highway and 7km from Sturt Highway. The estate has Road train and HPV (Higher Productivity Vehicle) access, is appropriately located away from other sensitive land uses. Enhancement and protection of Red Hill Estate facilities and connections to the highway will ensure Red Hill estate can continue to thrive and grow.

To deliver this planning priority, Council will:

- Support enhancements to the freight network and infrastructure, including rail infrastructure, to facilitate a mode shift from road to rail, linking freight corridors to rail networks.
- Advocate for the development of appropriate infrastructure to facilitate community and public transport needs.
- Plan and advocate for funding for redevelopment of or the construction of key transport facilities and infrastructure.

Narrandera Shire Council will achieve this through the following actions:

- Identify and protect future transport corridors and the Narrandera-Leeton Airport from incompatible land uses. Incorporate appropriate controls into the DCP.
- Undertake a strategic review of the Narrandera-Leeton Airport.
- Review policies to encourage services for the travelling public and tourism.
- Deliver actions of the Roads Review including implementation of an effective road hierarchy.
- Investigate opportunities for industries which may benefit from Red Hill Estate's location close to major transport routes.

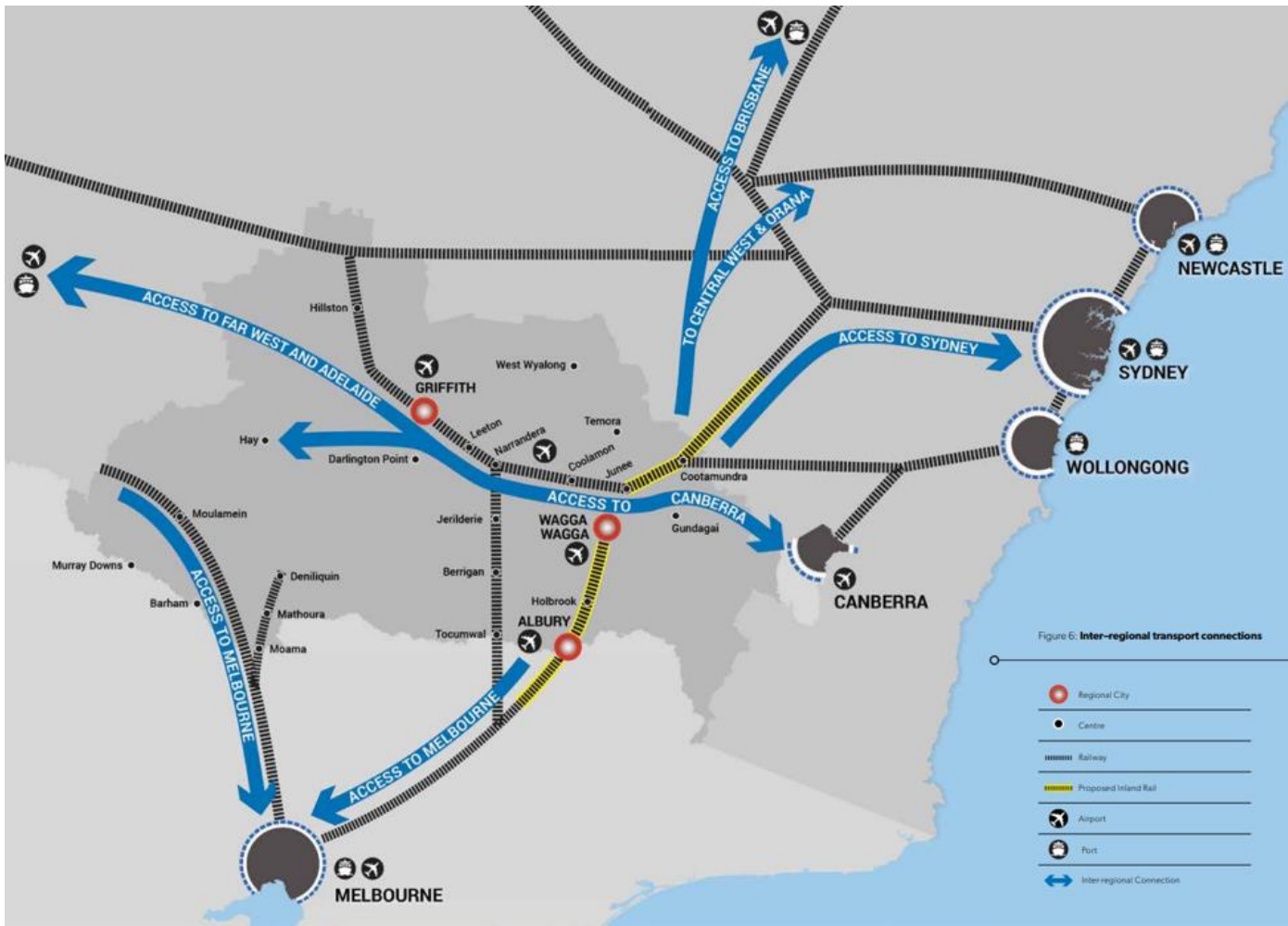


Figure 6: Inter-regional transport connections

Inter-regional transport network
 (Source: Riverina Murray 2036 Regional Plan)

Priority 6 Industry growth and diversification

Gives effect to the following Riverina Murray Regional Plan Directions:

- Direction 1: Protect the region's diverse and productive agricultural land.
- Direction 2: Promote and grow the agribusiness sector.
- Direction 3: Expand advanced and value-added manufacturing.
- Direction 4: Promote business activities in industrial and commercial areas.

Around 88.9% of the Shire's land is used for agriculture, with the value of agricultural production in 2011 being \$168.4 million (RMCG, 2016). Agriculture is dominated by dryland, broadacre farming, mainly for cropping (grains, legumes and oilseeds) and cattle and sheep (for wool and meat) production. Only 2.5% of agricultural land in the Shire is irrigated with the main irrigated activities being grapes, fruit, nuts, vegetables, cotton and rice production. However, recent investment in the Shire may see a shift with the establishment of a large poultry farm, expanded hazelnut plantations and piggery. Aquaculture is another sector set to expand with a \$4.4 million investment to the Narrandera Fisheries.

In an agricultural dependent economy like Narrandera, there are a variety of value-adding opportunities to diversify our produce beyond just production. Opportunities include organic and free-range production methods; packaging of produce; and preparing processed foods such as jams and nuts grown in the region. Council will coordinate the value-added manufacturing industries being strategically located so they have ready and cost-effective access to the regional freight network, utility infrastructure and export markets to help decrease supply chain costs. The Red Hill Industrial Estate is suitable for heavy industries and has capacity for further value-added manufacturing sites to be established.

Narrandera Council acknowledges and welcomes the demographic shift to aging population. Council will continuously advocate to improve health, aged care and social assistance service, programs and facilities. Increased services and facilities will provide more employment within shire strengthening another employment sector that Narrandera can benefit from.

The shift to renewable energy will allow Narrandera to produce such energy from within the shire. Solar farms like Yarrabee Solar project, Sandigo Solar projects are pioneers in Narrandera, leading the shire into an environmentally friendly industry where the energy produced will be used in the shire and exported, while creating local employment opportunities and economic benefits. Council will continue to facilitate emerging industries being appropriately located within the shire.

To deliver this planning priority, Council will:

- Collaborate with State agencies, local business and land owners to identify important agricultural land and protect it from incompatible developments.
- Support renewable energy production in suitable locations.
- Encourage co-location of agricultural value-added industries in appropriate locations.
- Protect the Red Hill Industrial Estate from incompatible land uses on nearby land.

Narrandera Shire Council will achieve this through the following actions:

- Provide an adequate supply of industrial and business land.
- Reviewing LEP and DCP controls to support these priorities.

- Review the Narrandera Land Use Strategy to protect agricultural land from fragmentation and consider flexible development standards to promote agribusiness sector

Monitoring and action plan

An Attractive Region

Priority	Action	Timing	Measures
Priority One Diverse Housing Options	1.1 Complete a local housing strategy to establish likely sites for in fill development, green field sites, development standards, etc	Short term 2 years	Completion and adoption of a local housing strategy
	1.2.1 Undertake a “house keeping” review of the NSC LEP and DCP controls to ensure an adequate supply of diverse housing options and temporary accommodation choices	Short term 2 years	Review and adoption of the revised Narrandera Local Environmental Plan 2013
	1.2.2 Upon completion of housing strategy consider need for any planning proposals to further amend the LEP as a result of the strategy	Medium term 3 years	Review and adoption of the revised Narrandera Local Environmental Plan 2013
	1.3 Monitor demand and ensure that	Ongoing	Ensure that a minimum five (5)

	additional land is made available at appropriate times to support growth if needed		years supply of residential zoned land (based on average take up rates) is available
Priority Two A vibrant place to visit and stay	2.1 Review our LEP to allow for nature and food based tourism in appropriate locations through flexible land use uses (e.g. artisan food and drink businesses, visitor & tourist accommodation and eco tourism)	Short term 1 year	Review and adoption of the revised Narrandera Local Environmental Plan 2013
	2.2 Investigate opportunities to increase signage along key routes for local attractions to take advantage of highway frontages	Short term 2 years	Completion and adoption of the review of the Narrandera Local Development Control Plan
	2.3 Create a Plan of Management for Council operated open spaces, including the potential to rezone to Public recreation zone	Medium term 3-5 years	Completion of a Plan of Management for our open spaces
Priority Three A sustainable region adaptive to changing conditions	3.1 Finalise and implement the Integrated Water Cycle Management Plan	Short term 1 year	Completion and adoption of the Narrandera Integrated Water Cycle Management Plan

	3.2 Regularly review strategies and mapping which manage flood affected and bushfire prone areas	Ongoing	Compliance of development in flood affected and bushfire prone areas
	3.3 Incorporate controls into the Narrandera Development Control Plan for sustainable environmental outcomes (such as energy efficiency, passive solar dwelling and subdivision development, water saving initiatives)	Short term 2 years	Complete and adopt the review of the Narrandera Development Control Plan
Priority Four Protection and management of our environment and heritage	4.1 Update Development Control Plan to regulate high conservation vegetation as per the <i>State Environmental Planning Policy (Vegetation in Non-Rural Areas) 2017</i>	Short term 2 years	Complete and adopt the review of the Narrandera Development Control Plan.
	4.2 Prepare a comprehensive Koala Plan of Management	Medium term 3-5 years	Adoption of a Koala Plan of Management

	4.3 Review Council owned land for opportunities to enhance biodiversity values	Medium term 3-5 years	Complete a review of Council owned land to determine status of biodiversity and develop strategies to enhance biodiversity values
	4.4 Work with the local Aboriginal community to develop resources regarding places and items which should be suitably protected and managed	<ul style="list-style-type: none"> • Ongoing • Medium term 3-5 years 	<ul style="list-style-type: none"> • Consult with the Narrandera Local Aboriginal Land Council on major developments. • Review Narrandera Development Control Plan in relation to adaptive reuse of heritage items
Priority Five Transport and infrastructure connectivity	5.1 Identify and protect transport corridors and the Narrandera-Leeton Airport from incompatible land uses. Incorporate appropriate controls into the DCP	Short term 2 years	Complete and adopt the review of the Narrandera Development Control Plan
	5.2 Undertake a strategic review of the Narrandera-Leeton Airport to determine suitable planning actions (i.e. develop minimum acoustic standards applying to adjacent development).	Short term 2 years	Complete and adopt the review of the Narrandera Development Control Plan

	5.3 Review policies to encourage services for the travelling public and tourism through flexible land use uses (e.g. artisan food and drink businesses, visitor & tourist accommodation)	Short term 1 year	Review and adoption of the revised Narrandera Local Environmental Plan 2013
	5.4 Deliver actions of the Roads review including implementation of an effective road hierarchy.	Short term 1 year	Complete and adopt the Narrandera Shire Road review
	5.5 Investigate opportunities for industries which may benefit from Red Hill estate's location close to major transport routes by reviewing the permitted land uses to determine an appropriate mix of development.	Short term 2 years	Review and adoption of the revised Narrandera Local Environmental Plan 2013
Priority Six Industry growth and diversification	6.1 Provide an adequate supply of industrial and business land.	On going.	Ensure that a minimum five (5) years supply of industrial and business zoned land (based on average take up rates) is available.
	6.2 Reviewing LEP and DCP controls to support supply of	Short term 2 years	Completion and adoption of the review of the Narrandera Local

	industrial and business land.		Environmental Plan 2013 and Development Control Plan
	6.3 Review the Narrandera Land Use Strategy to protect agricultural land from fragmentation and consider flexible development standards to promote agribusiness sector	Short term 1 year	Review and adoption of the revised Narrandera Local Environmental Plan 2013

References

Australian Bureau of Statistics (ABS) (2016). "2016 Census QuickStats: Narrandera". ABS. Accessed 2019 from:

https://quickstats.censusdata.abs.gov.au/census_services/getproduct/census/2016/quickstat/LGA14750

NSW Department of Planning and Environment (DPE) (2018). "Demography and Housing - Regional NSW". NSW Government.

<https://public.tableau.com/views/DemographyandHousingRegionsEPLADPENSW18129514/About>

NSW Department of Planning, Industry and Environment (DPIE) (2016). "Riverina Bioregion". NSW Government. Accessed 2019 from: <https://www.environment.nsw.gov.au/bioregions/RiverinaBioregion.htm>

RMCG (2016). "Riverina Murray Agricultural Industries". RMCG. Accessed 2019 from: https://www.dpi.nsw.gov.au/_data/assets/pdf_file/0009/843363/Draft-ial-mapping-riverina-murray-agricultural-profile.pdf

Roads and Maritime Services (RMS) (2019). "Road Train Network Map". Transport for NSW. Accessed 2019 from <https://www.rms.nsw.gov.au/business-industry/heavy-vehicles/maps/road-train-map/index.html>