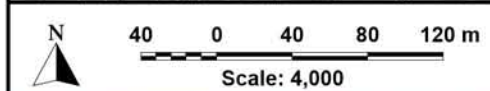




EXISTING STORMWATER DRAINAGE ELEMENTS

- 1 off 300 mm RCP
- 1 off 375 mm RCP
- 1 off 450 mm RCP
- - - 2 off 450 mm RCPs
- 1 off 525 mm RCP
- 1 off 600 mm RCP
- 1 off 750 mm RCP
- - - 2 off 750 mm RCPs
- - - 3 off 750 mm RCPs
- 1 off 900 mm RCP
- 1 off 1800 mm RCP
- 1 off 300 mm wide by 100 mm high RCBC
- 1 off 450 mm wide by 300 mm high RCBC
- 1 off 600 mm wide by 450 mm high RCBC
- - - 2 off 600 mm wide by 450 mm high RCBCs
- 1 off 750 mm wide by 600 mm high RCBC
- 1 off 1200 mm wide by 600 mm high RCBC
- 1 off 1500 mm wide by 1200 mm high RCBC
- 1 off 1600 mm wide by 1500 mm high RCBC
- 1 off 1800 mm wide by 1200 mm high RCBC
- 1 off 2000 mm wide by 1300 mm high RCBC
- Inlet Pit
- Junction Pit
- Headwall
- Concrete Lined Channel



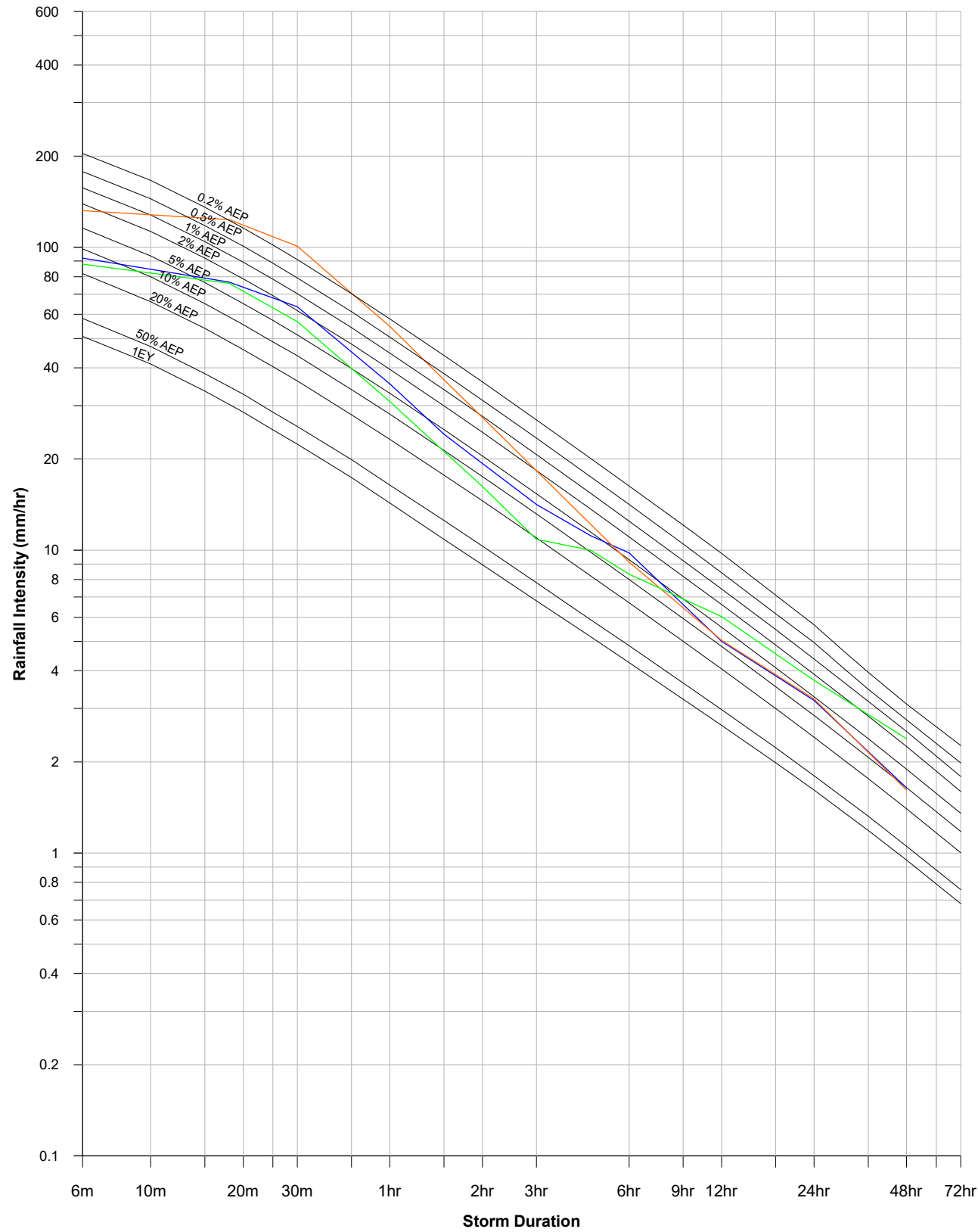
LEGEND
 Extent of Detailed Ground Survey Data

**NARRANDERA CBD
 FLOOD MITIGATION SCHEME**

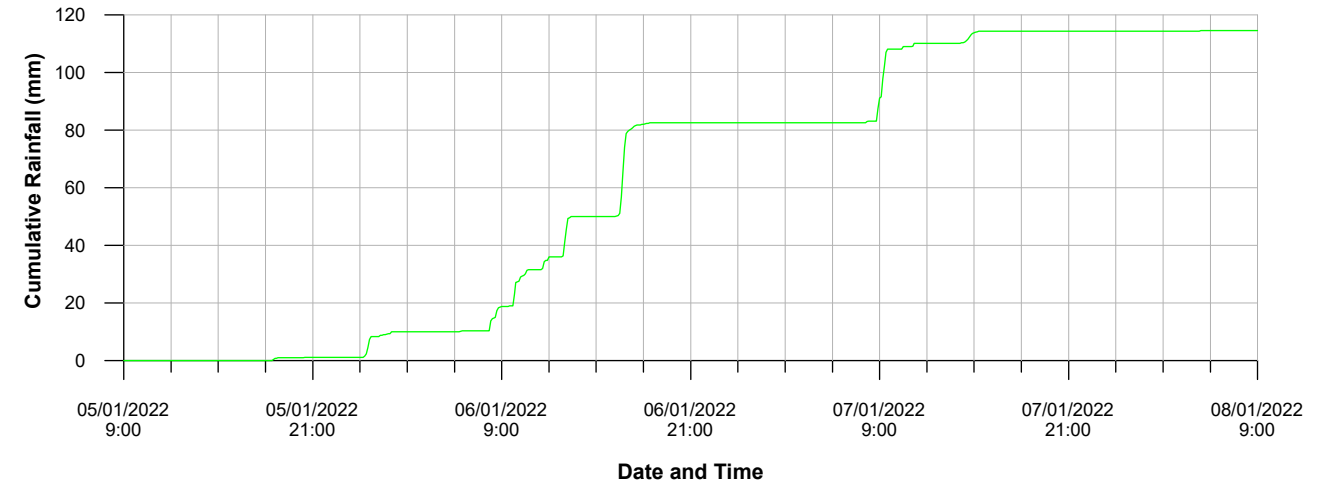


Figure 1
 LAYOUT OF EXISTING DRAINAGE SYSTEM IN VICINITY OF NARRANDERA CBD

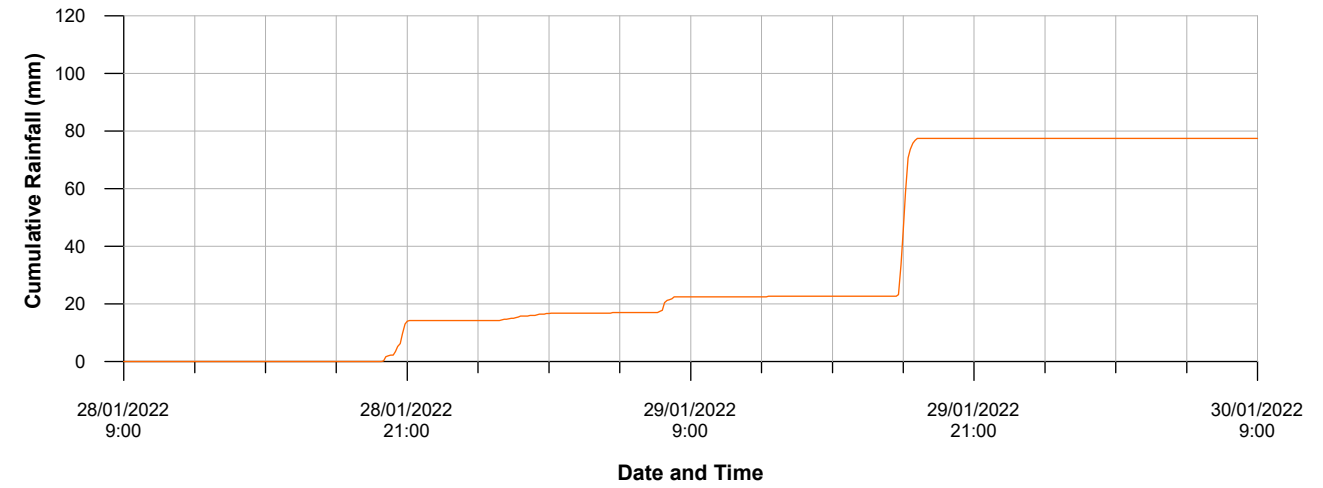
INTENSITY-FREQUENCY-DURATION CURVES



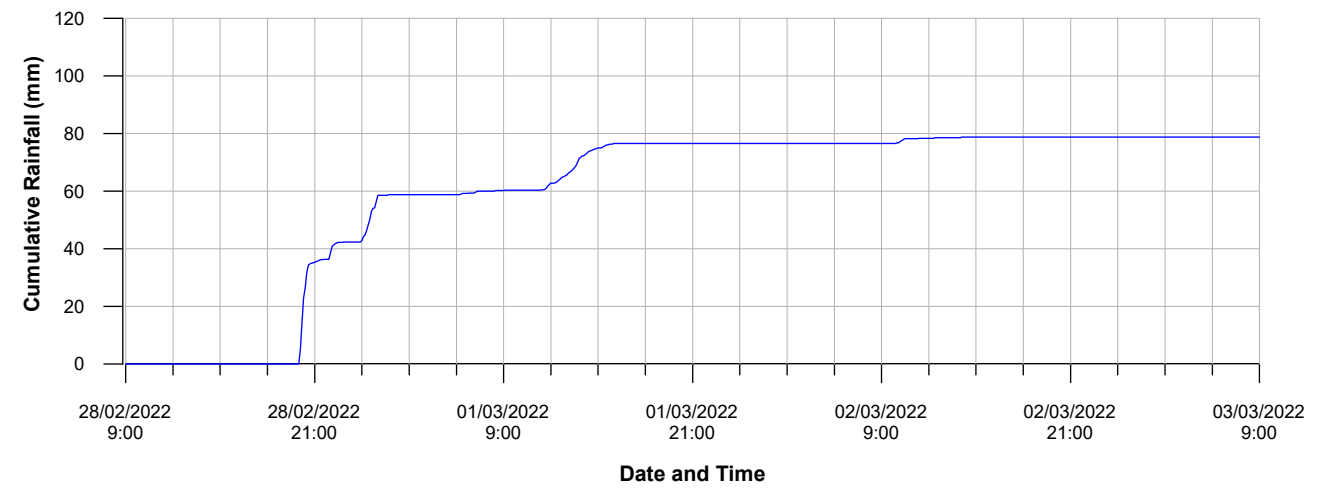
CUMULATIVE RAINFALL - 6-8 JANUARY 2022



CUMULATIVE RAINFALL - 29-30 JANUARY 2022



CUMULATIVE RAINFALL - 1-3 MARCH 2022



LEGEND

- 6-8 January 2022
- 29-30 January 2022
- 1-3 March 2022

NARRANDERA CBD FLOOD MITIGATION SCHEME

Figure 2

CUMULATIVE RAINFALL AND INTENSITY-FREQUENCY-DURATION CURVES - HISTORIC STORM EVENTS
NARRANDERA AIRPORT AWS RAIN GAUGE (GS 074148)





Indicative Depth of Inundation (m)

Blue	0.10 to 0.20
Dark Blue	0.20 to 0.30
Green	0.30 to 0.40
Light Green	0.40 to 0.50
Yellow-Green	0.50 to 0.60
Yellow	0.60 to 0.70
Orange-Yellow	0.70 to 0.80
Orange	0.80 to 0.90
Red-Orange	0.90 to 1.00
Red	> 1.00

LEGEND
 Modelled Stormwater Network

**NARRANDERA CBD
 FLOOD MITIGATION SCHEME**

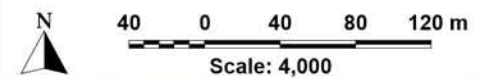
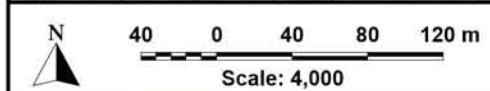


Figure 3

INDICATIVE EXTENT AND DEPTH OF INUNDATION
 PRESENT DAY CONDITIONS - 5% AEP



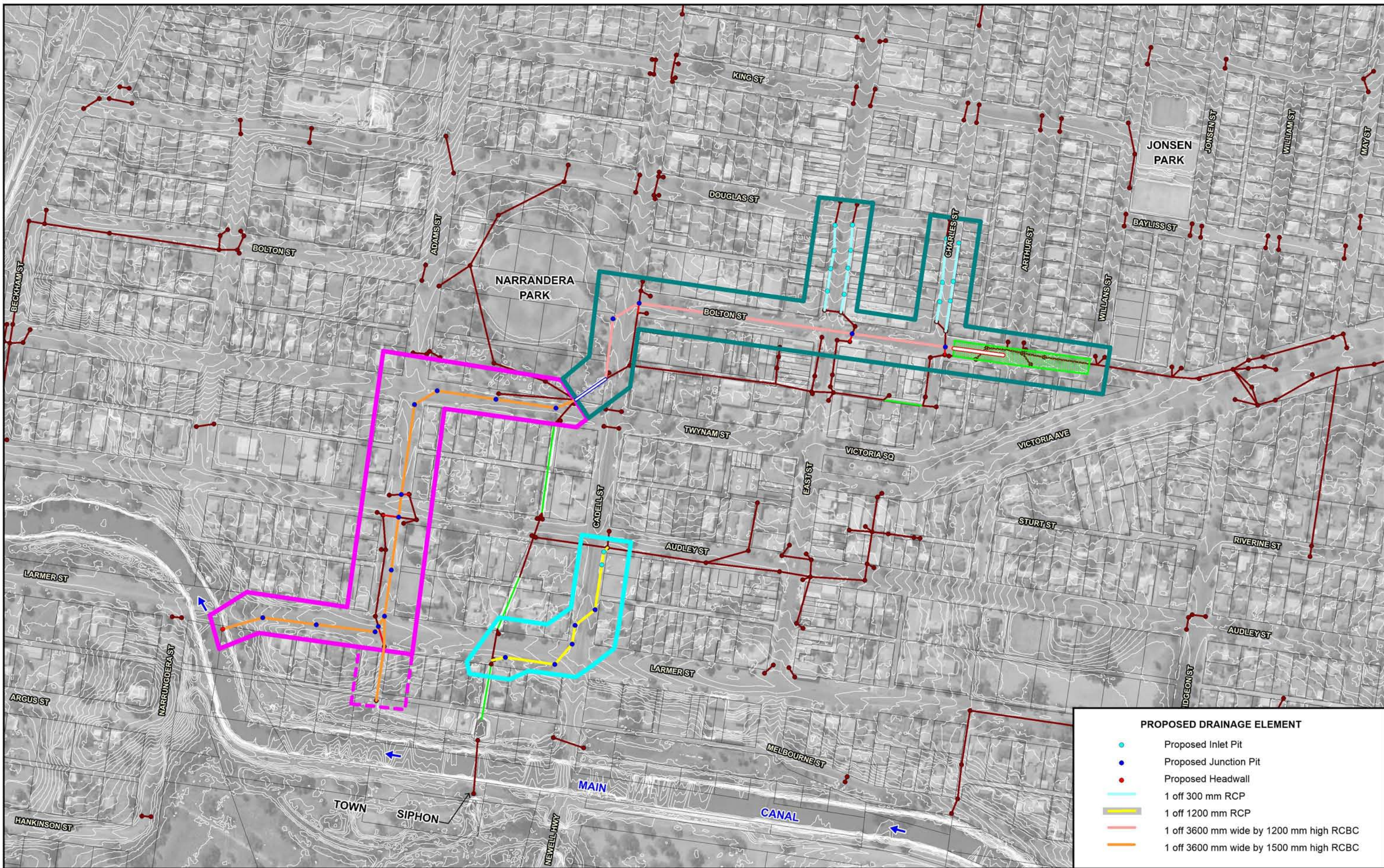


LEGEND
 Modelled Stormwater Network

**NARRANDERA CBD
 FLOOD MITIGATION SCHEME**



Figure 4
 INDICATIVE EXTENT AND DEPTH OF INUNDATION
 PRESENT DAY CONDITIONS - 1% AEP



PROPOSED DRAINAGE ELEMENT	
	Proposed Inlet Pit
	Proposed Junction Pit
	Proposed Headwall
	1 off 300 mm RCP
	1 off 1200 mm RCP
	1 off 3600 mm wide by 1200 mm high RCBC
	1 off 3600 mm wide by 1500 mm high RCBC

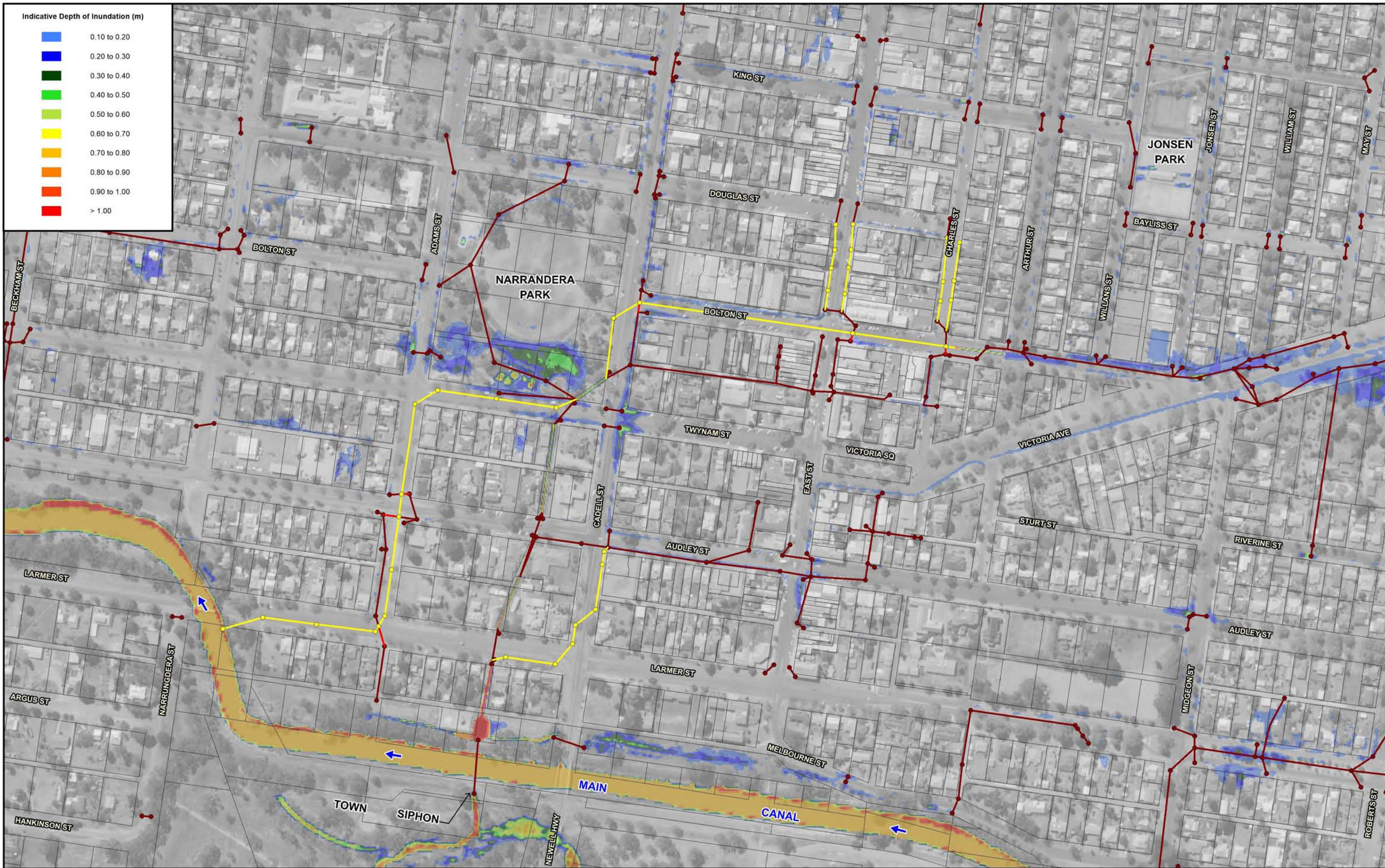
Scale: 4,000

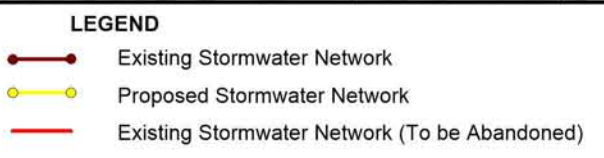
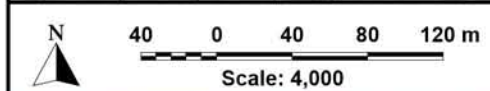
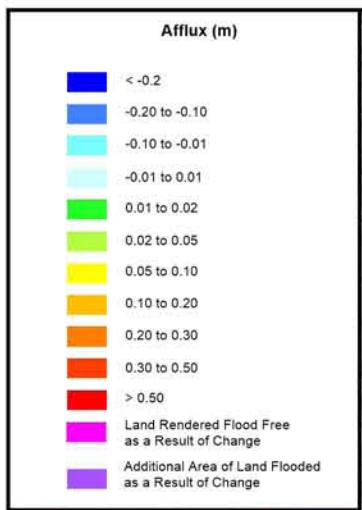
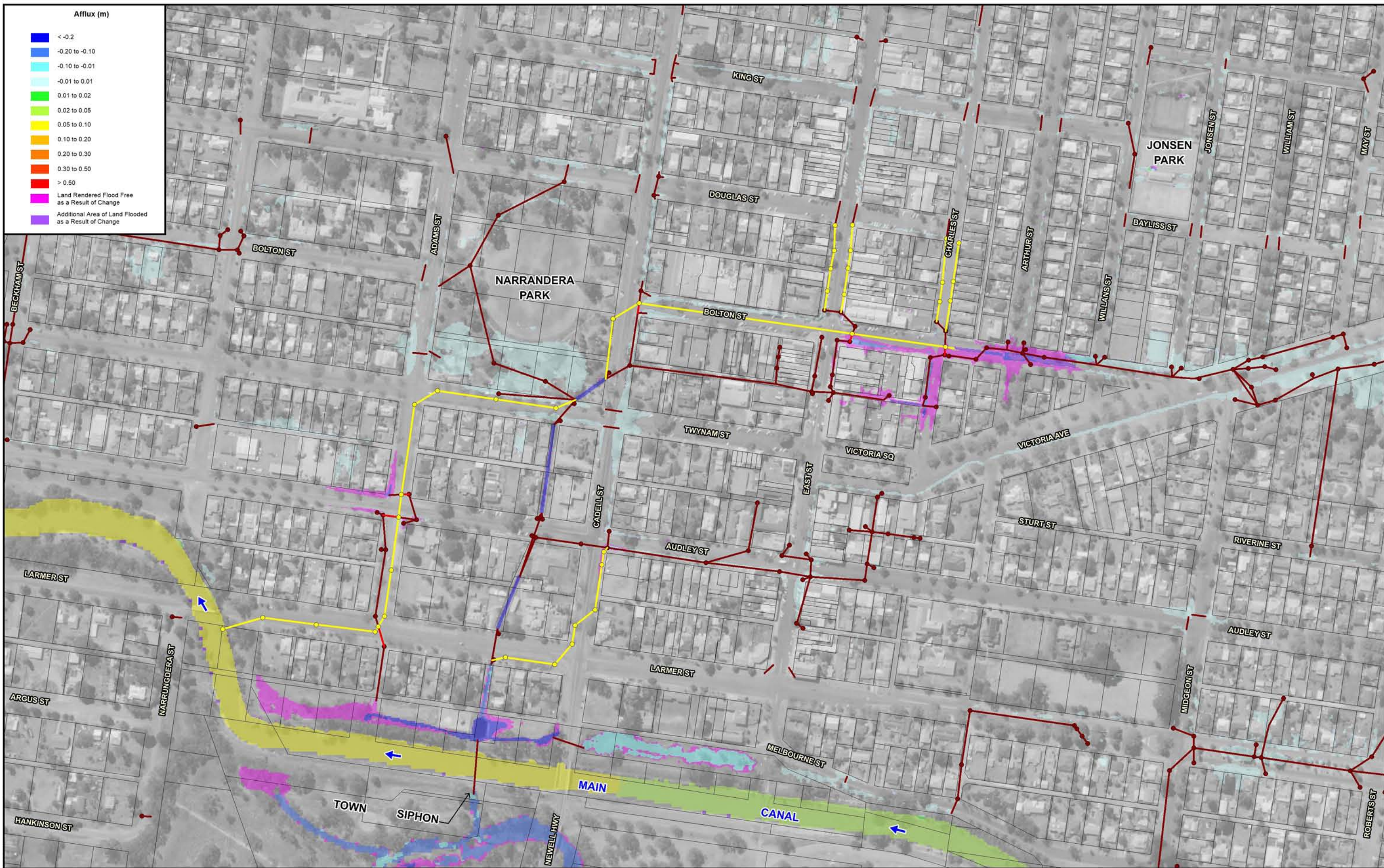
LEGEND

	Existing Stormwater Network (to be Retained)		Proposed Line 2B Works		Extent of Proposed Road Regrading
	Existing Stormwater Network (to be Abandoned)		Proposed Line 3 Works		
	Existing Concrete Lined Channel		Proposed Concrete Lined Channel		
	Extent of Proposed Line 1 Works		Upgraded Concrete Lined Channel		
	Extent of Proposed Line 2A Works				

**NARRANDERA CBD
FLOOD MITIGATION SCHEME**

Figure 5





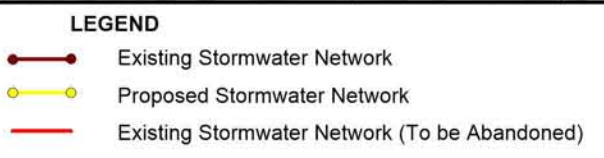
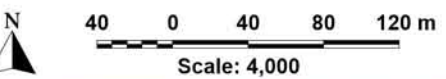
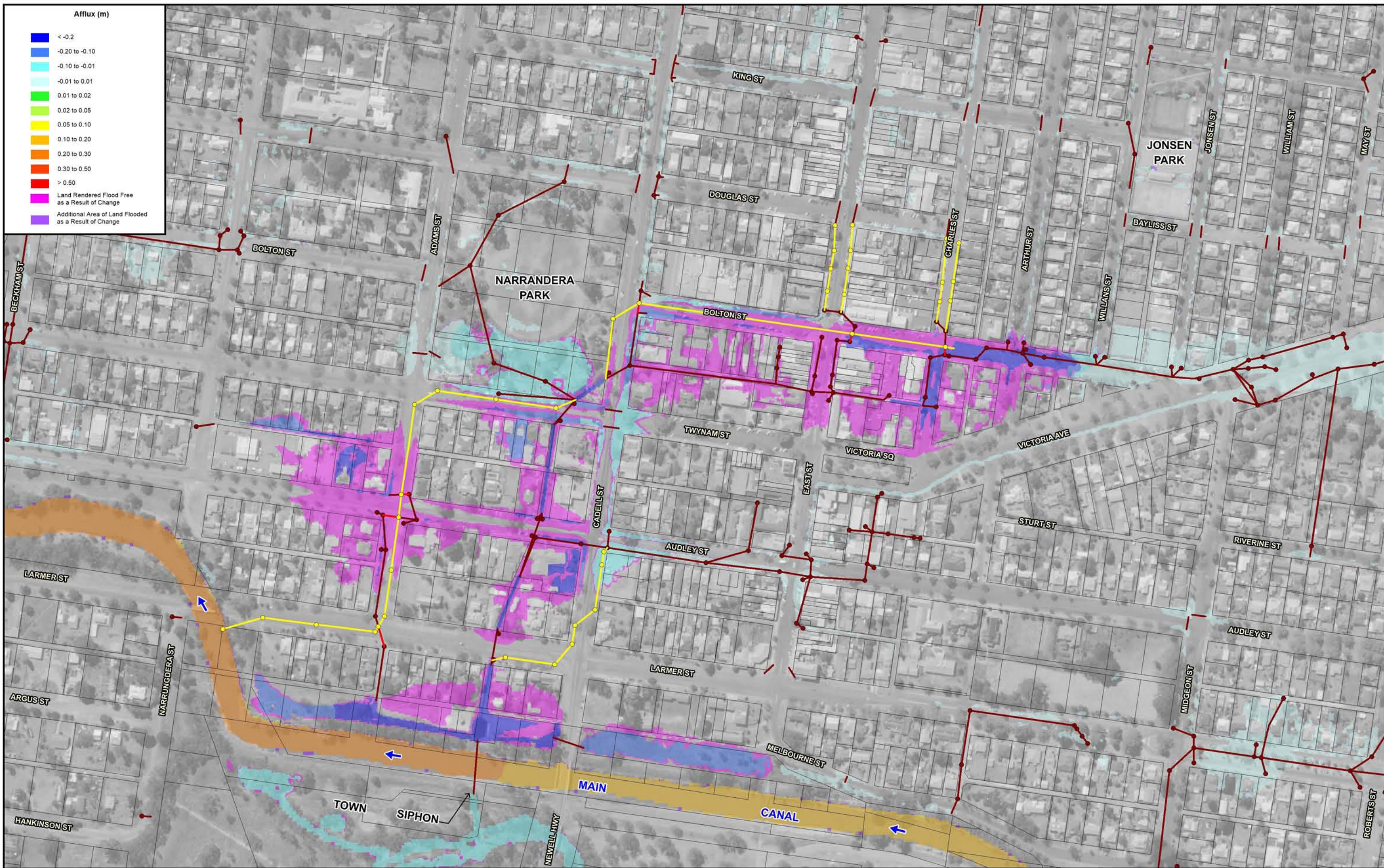
**NARRANDERA CBD
FLOOD MITIGATION SCHEME**

Figure 7



Figure 8

INDICATIVE EXTENT AND DEPTH OF INUNDATION
POST-FLOOD MITIGATION WORKS - 1% AEP



**NARRANDERA CBD
FLOOD MITIGATION SCHEME**

Figure 9